

Customer :

customer

Customer part :

customer part

Comment :

Comment

S1=1.53

S2=2.33

Tmax=467

Tp S2=506.0

PI=0.4

HI=78

Sample =1678.60

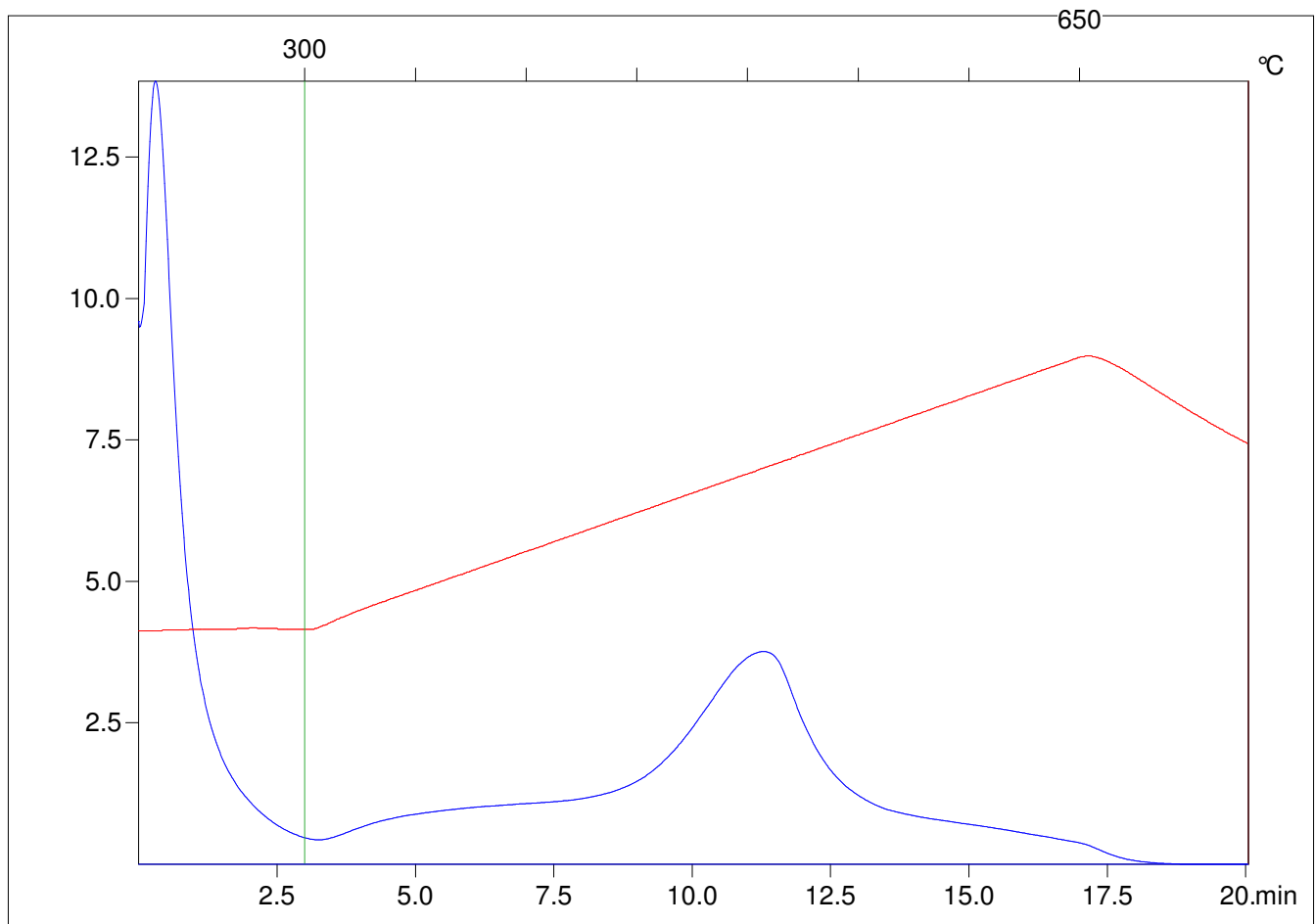
Method =Bulk Rock

Cycle=Basic

KFID(10*9)=1444

Qty =70.1

TOC=2.97



C:\VINC\PK1_1792\PK032.R00 : FID pyrolysis graphic

State

Pyro Status

Oxi Status